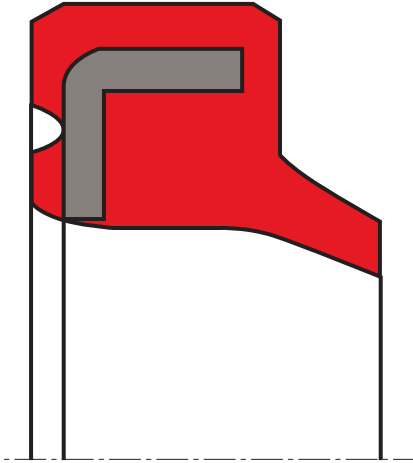


## wiper A03-SD

## seal spec



### description

elastomer wiper with a sharply-defined lip edge and metal housing. the two parts are vulcanized into a single unit.

### application



not bolded symbols; please consult our technical for application limitations

### category of profile

molded/standard/trade product or machined with minor design change.

### single acting

### area of application: hydraulics & pneumatics

- hydraulic & pneumatic systems, reciprocal movements, medium dirt load.
- earth moving equipment, industrial vehicles, presses, mining, injection moulding machines, support cylinders, agricultural machinery, cranes, loading platforms, telescopic cylinders.

### advantages

A03-SD wiper for axially accessible housings, amongst others, for standardised housings according to ISO 6195 Type B.

- secure seating in housing (press fitting).
- made of highly wear-resistant polyurethane.
- no open ring gap to the outside (dirt pocket) between rod and housing.
- easy to manufacture housing.
- no corrosion between housing and wiper cage.

### function

the A03-SD is a single function wiper. it is pressed against the descending piston rod wiping the dirt from the surface of the rod. the seals, their associated elements and the hydraulic medium are protected from dirt. the elastomer-coated metal ring with its additional press fit on the outer circumference, ensures the functionally correct fit of the wiper in the housing.

### operating parameters & material

material		temperature	running surface speed
wiping part	housing		
s-mart PU	(metal) unalloyed steel DIN 1624	-30 °C ... +110 °C	1 m/s
s-mart NBR	(metal) unalloyed steel DIN 1624	-30 °C ... +100 °C	1 m/s

the stated operation conditions represent general indications. it is recommended not to use all maximum values simultaneously. surface speed limits apply only to the presence of adequate lubrication film.

### media

hydraulic oils acc. DIN 51524/51525, lubricating oils, other mineral oil fluids HFA, HFB, HFC highly non-flammable hydraulic fluids acc. VDMA 24317.

**surface quality**

surface roughness	Rtmax (µm)	Ra (µm)
sliding surface	according to seal data	
bottom of groove	≤6,3	≤1,6
groove face	≤15	≤3

**tolerance recommendation**

seal housing tolerances	
ØD	H8

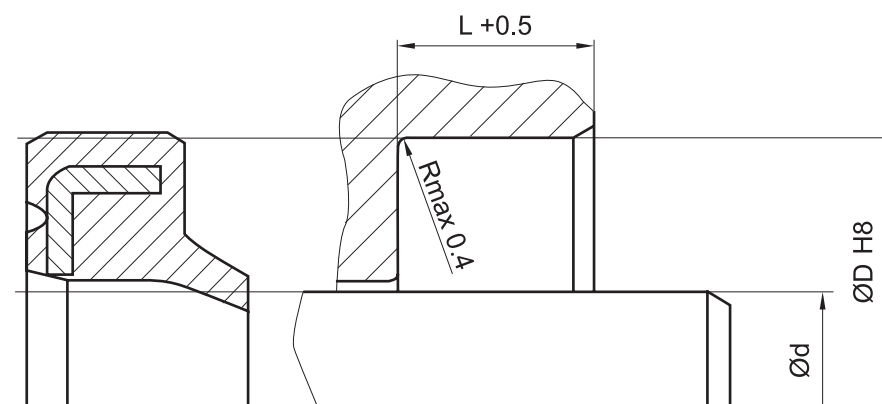
**fitting & installation**

the wiper is easily built in to split housing, provided the lead-in chamfer is in accordance with the table below:

H [mm]	chamfer [mm] with angle 20°
≤ 4,5	0,6
5	0,6
6	0,8
7	0,8
10	1,4
12	1,8
14	2
16	2,4

**seal & housing recommendations**

please note that we are able to produce those profiles to your specific need or any non standard housing. for detail measurements, please see seal-mart catalog...



don't hesitate to contact our technical department for further information or for special requirements (temperature, speed etc.), so that suitable materials and/or designs can be recommended.